



qinlox consulting GmbH

COMPANY OVERVIEW

CONTENT

QUALITY IN LOGISTICS	<u>3</u>
OUR CORE COMPETENCIES	<u>4</u>
DIGITAL SUPPLY CHAIN	<u>5</u>
PRESENCE & EXPERTISE	<u>6</u>
WAREHOUSE MANAGEMENT	<u>7</u>
PRODUCTION SYSTEMS	<u>13</u>
TRANSPORTATION MANAGEMENT	<u>15</u>
SOCIAL RESPONSIBILITY	<u>17</u>
WHY QINLOX?	<u>18</u>

No part of this publication may be reproduced or transmitted in any form or for any purpose without the express permission of qinlox consulting GmbH, Germany or a qinlox affiliate company. SAP EWM and other SAP products and services mentioned herein as well as their respective logos are trademarks or registered trademarks of SAP SE (or an SAP affiliate company) in Germany and other countries.



QINLOX CONSULTING GMBH

QUALITY IN LOGISTICS

Digitization of the supply chain, technical innovations, optimization of delivery dates, stocks, capacities and lead times, increasingly complex logistics against the background of industry- and company-specific processes and the challenges of seamless integration into existing or new systems?

Qinlox was founded in 2017 by former employees of SAP SE and, as a young company, combines the knowhow, industry expertise and excellence of proven SAP logistics experts, former SAP standard developers and SAP architects with many years of experience in the implementation and integration of logistics solutions based on SAP technology.

As logistics consultants and SAP experts, we specialize in optimizing business processes, systems and organizations – Our implementation consultants and supply chain experts help our customers to implement, integrate and optimize their intralogistics-, production-, distribution- and transportation-processes.

"A startup with more than 20 years of expertise for the implementation and integration of logistics solutions based on SAP technology"

- Founded by former SAP colleagues
- 100% employee owned and independent
- EWM Expertise from the very beginning



"As SAP Silver Partner and the spatial and personal proximity to Walldorf, we work closely and intensively with SAP, create added value for our customers and deliver high quality logistics services."

OUR CORE COMPETENCE

LOGISTICS & PRODUCTION WITH SAP

Companies today are planning their digital journeys, transforming and digitalize existing or inventing new business models, material-, product- and information-flows, reengineering business processes across all logistic-channels to finally reimagine work.

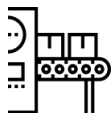
SAP offers innovations that may help customers to add value, increase flexibility, transparency, efficiency, scalability and finally meet customer expectations to implement their digital journey. From roadmap to transformation, from architecture, deployment and migration. We help our customers to leverage the full potential of the Digital-Supply-Chain and get the most out of their SAP investment in SAP S/4HANA.

Warehouse logistics, transportation management, production-systems, material flow control and system integration based on SAP. We help our customers to use the full potential of their SAP solution.



WAREHOUSE MANAGEMENT

From small sites to large logistics centers or production sites, manual or highly automated, from simple to complex, based on SAP S/4HANA or decentralized - We successfully implement warehouse management based on SAP - locally, regionally and internationally. We know the industry-specific processes and integration requirements, and are experts in harmonizing business processes, global and regional templates and corporate roll-outs.



PRODUCTION-SYSTEMS

Production-Systems based on SAP: From evaluation, strategic alignment, control & optimization, value-Stream analysis & design to integration and implementation



TRANSPORTATION MANAGEMENT

Our competencies are based on a systematic integration of the experience, talents and specialist knowledge of our SAP TM experts for Transportation Execution, Planning & Controlling, Integration, functional enhancements and Best-Practices.

We are experts for SAP-based logistics solutions and help our customers to implement and transform their digital business processes. Our satisfied customers include both; midmarket companies as well as well-known large corporations from various industries.

SAP DIGITAL SUPPLY CHAIN

INDUSTRY EXPERTISE & BEST-PRACTICES

Companies today are planning their digital journeys, transforming and digitalize existing or inventing new business models, material-, product- and information-flows, reengineering business processes across all logistic-channels to finally reimagine work.

SAP offers innovations that may help customers to add value, increase flexibility, transparency, efficiency, scalability and finally meet customer expectations to implement their digital journey. From roadmap to transformation, from architecture, deployment and migration. We help our customers to leverage the full potential of the Digital-Supply-Chain and get the most out of their SAP investment in SAP S/4HANA.

- SAP S/4HANA Roadmap & Transformation
- SAP S/4HANA Architecture & Deployment
- SAP S/4HANA Migration

As supply chain experts we primarily focus on what we do best : The implementation, integration and optimization of Warehouse-Management, Production-Systems and Transportation Management.

INDUSTRY-EXPERTISE & BEST-PRACTICES

Industry specific processes, functions and system integration? Our experience is based on the realization of logistics projects in the following industries:



Automotive



Consumer Goods



Contract Logistics



Chemical & Pharma



Manufacturing



Retail & Wholesale



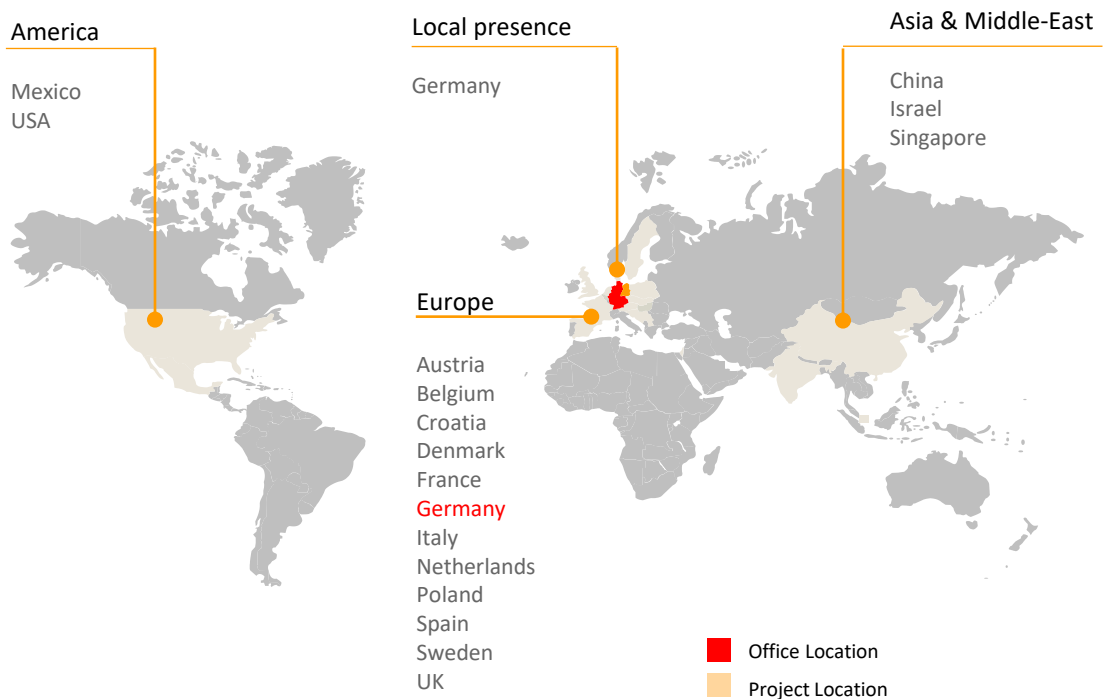
High-Tech

We know the industry-specific processes and integration requirements, and are experts in harmonizing business processes, global and regional templates and corporate roll-outs.

LOCAL PRESENCE

GLOBAL EXECUTION EXPERTISE

Local presence with global execution expertise. Our experienced colleagues have successfully delivered projects and added value in the following regions:



We are proud of our projects and like to share our experience. At the same time, we respect customer agreements and the official SAP reference guidelines, and do not pass on detailed information about customer projects to third parties without authorization.

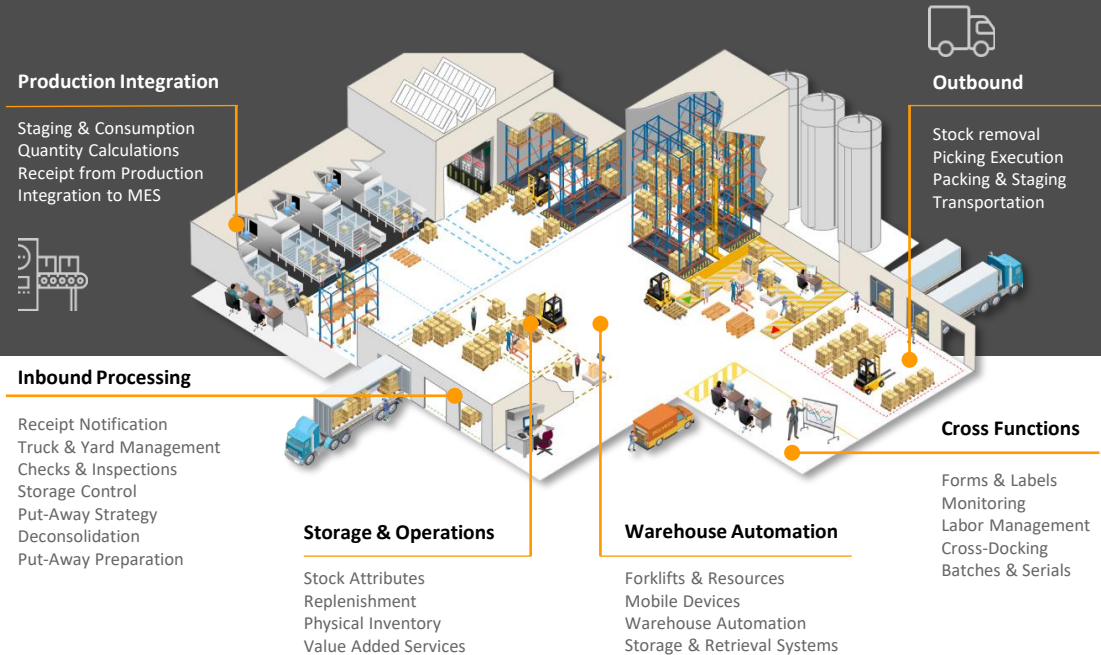


Lars Mutterer
Managing Director / Supply Chain Execution

If you'd like to know more about our customer references, where Qinlox, or our expert consultants, in their role of former employees, have either led the implementation, partnered with SAP Consulting or other SAP implementation partners, or have taken over a significant part of the implementation effort - please contact us!



WAREHOUSE MANAGEMENT



We are experts from the very beginning when it comes to implement SAP warehouse management solutions, for small to large warehouses, from simple to complex, manual to highly automated, leveraging the full potential of SAP EWM - de-central, as well as embedded into SAP S/4HANA.

- SAP EWM Extended Warehouse Management
- SAP S/4HANA - EWM
- SAP S/4HANA - Stock-Room-Management
- SAP ERP-WM / TRM

Qinlox offers a holistic portfolio of consulting services for warehouse management based on SAP technology: from strategic advice and evaluation to optimization, implementation and integration, locally, regionally and internationally.



CONSULTING & IMPLEMENTATION

WAREHOUSE MANAGEMENT

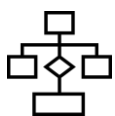
Adding value for our customers from strategy to execution: Supporting evaluation, migration, and deployment approaches, go-lives and continuous improvements – leveraging existing IT infrastructure, reducing costs of implementation - providing accelerators, tools and a solid methodology.

We help our customers to get the most out of SAP Warehouse Solutions and underlying Technology.

- Strategy- & Process-Consulting
- Proof-of-Concepts & audits
- Evaluation & Business Blueprints
- Prototyping & Spot-Consulting
- Implementation and integration

We implement and optimize intra-logistic processes, and use a solid methodology to provide bespoke solutions, considering existing systems, applications and IT infrastructure, with a clear focus on the SAP standard.

Qinlox, the experts for the implementation of SAP EWM, integrated or decentralized, for small to large warehouses, from simple to complex, manual to highly automated



From development to the first implementation of SAP EWM, our experts were there from the beginning!



Dr. rer. Nat. Bernd Bühler
Managing Partner / SAP EWM Architekt

"Our competencies are based on a systematic integration of the experience, talents and expertise of our experts."

From evaluation, project planning to implementation and integration considering existing and new systems, infrastructure and data sources - Qinlox supports SAP customers from strategic alignment to operational implementation and delivers uncompromising quality in the selection, implementation and operation of SAP logistics solutions".

WAREHOUSE AUTOMATION WAREHOUSE MANAGEMENT

Integration with SAP ERP-Processes, Production- and Transportation management, Warehouse-Automation as well as storage and retrieval systems - drawing from many years of knowledge in controlling, integrating and deploying automated warehouses and picking technology by voice, by vision and light, based on SAP and legacy technology.



Spanning the complete range of innovations - from small and simple warehouse operations up to large scale and highly automated warehouse sites for various industries:

- Integrate SAP EWM (MFS) warehouse automation, conveying- & Sub-Systems
- Integrate end-to-end supply chain execution and production processes
- Leveraging SAP TM, SAP ERP as well as SAP S/4HANA.
- Retrofit and integration of existing warehouse automation systems
- A one-stop-shop for implementation, service and support

„Conveying systems and warehouse automation. The seamless integration of hard- and software are vital for optimum capacity utilization and exact control of the material-flow.“

We are experts in warehouse automation and help our customers to seamlessly integrate SAP EWM with existing and future material-flow-control systems, hardware and underlying technology“.



Dr. Ing. Claudius Brenner
Managing Director | Supply Chain Execution

TECHNOLOG & DEVELOPMENT

WAREHOUSE MANAGEMENT

Qinlox combines deep industry expertise, best-practices, technical know-how and unsurpassed delivery capabilities to drive breakthrough results leveraging SAP Standard. If necessary, Qinlox innovates and co-develops add-on software components, enhances existing functionality and specifies, designs and integrates bespoke solutions.



We help our customers to leverage, enhance and getting the most out of their new and existing SAP solutions, legacy and third-party implementations and IT architecture.

- SAP Standard-Compliant Add-on developments and bespoke solutions
- Accelerators and best-practices to lower TCI
- Co-Innovation leveraging latest UI-Technology

WE DEVELOP AND REALIZE STANDARD-COMPLIANT

We know the SAP standard and the scope of functions exactly, evaluate the desired extension and its feasibility before a planned adjustment and then enhance existing functionality with the experience of former SAP standard developers.



Andreas Gnacke
Managing Partner | SAP EWM Solution &
Development Architect

„As former standard developer at SAP SE and former product responsible architect for SAP EWM at the Center of Excellence (Value Prototyping) of SAP SE, I was involved in the development and market launch of SAP EWM for many years.

I look forward to supporting you in the architecture, implementation and enhancement of SAP EWM“.

TRAINING & ENABLEMENT WAREHOUSE MANAGEMENT

Training and the ability to execute are key factors to the success of each software implementation. We are experts when it comes to training and collaborative knowledge transfer to our customers.



Some of our colleagues are course instructors at SAP and are happy to share their knowledge and expertise with “key-users”, “multipliers” and IT departments to configure, run, enhance and operate the system.

- Learning needs analysis and curriculum
- Individual training sessions and content creation
- Bespoke trainings for SAP EWM and SAP Technology
- Knowhow-Transfer and collaboration during the project
- Former SAP-Trainers and Solution Instructors

Based on our many years of experience,
we deliver high-quality and individual training concepts!

"We are not only implementation Experts, but primarily hands-on implementers and process experts paired with functional and technical SAP knowhow and have a clear focus to share our expertise and knowledge with our customers. Individualized training content, a collaborative project methodology and delivery model, as well as a professional change management are as natural to us as a complete and professional documentation of the implemented business-processes and functions."



Jens Kappauf
Managing Partner | Supply Chain Execution

SERVICE & SUPPORT

WAREHOUSE MANAGEMENT

Innovative Implementation- and Usage-Concepts, Infrastructure- and Application-Management, functional enhancements and bespoke solution concepts?



In addition to our comprehensive service portfolio our customers can benefit from our valuable services and support to run, operate and continuously improve their SAP solution:

- SAP EWM core application
- SAP EWM MFS and PLC interfaces
- SAP ERP-Layer of EWM-Interface
- SAP WM, LES, TRM, TM, SD, MM
- Support of enhancements and add-ons
- Ticket system
- Individual dial-in numbers
- Individual mail addresses
- Trained service personal

SERVICE & SUPPORT 24x7

Qinlox provides 24x7 support in German or English language with an individual scope of SLA'S - either as a complementary service offering for Qinlox implementations, or onboarding and organizing the hand-over from third-party Implementations. Of course and gladly also for locations with warehouse automation.



Marc Hofheinz
Managing Partner | Supply Chain Execution

"Analysis, support and troubleshooting of SAP-supported business processes, their enhancements and optimization - with our market- and performance-oriented support offering we guarantee a stable operation of the implemented SAP applications. An Effective knowledge management, the excellent know-how of our multilingual support personnel are just as much a matter of course as keeping our performance promise: Quality in Logistics".



Warehouse Management

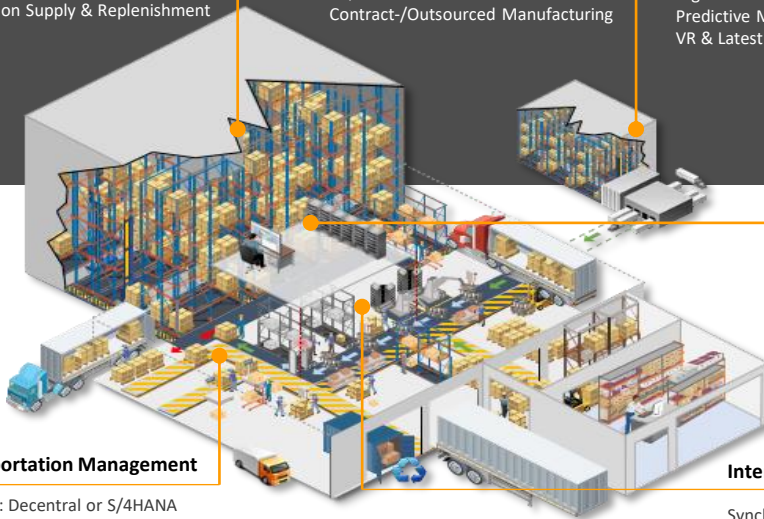
SAP EWM: Decentral or S/4HANA
Warehouse Automation & SAP MFS
Production Supply & Replenishment

Alternative supply concepts

Milk runs & Consolidation
JIS, JIT
Contract-/Outsourced Manufacturing

From Shop-Floor to Top-Floor

Transparency & Visibility
Digitalization, IoT & I 4.0.
Predictive Maintenance
VR & Latest UI-Technology



Production Planning

MES Integration
Scheduling & Planning
Inventory Management



Transportation Management

SAP TM: Decentral or S/4HANA
Transportation Planning & Execution
Integration & Best-Practices

Internal Supply Strategies

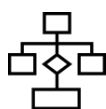
Synchronized tugger trains
Container-less parts supply
Consignment
Supermarket concepts
KANBAN, ...

Discrete, Repetitive or Process-Manufacturing? Enhanced and sophisticated internal supply chain strategies against the background of Digital-Transformation?

Today, the new digital supply chain is demand-driven at the speed of real time. Manufacturers leveraging SAP technology can already benefit from scalable, flexible deployment options, seamless integration of production processes, real-time visibility, planning accuracy, responsiveness and information accessibility. We help our customers to get the most out of their SAP investment, harmonize existing processes, implement new requirements and optimize their production systems.

We help our customers to get the most out of their SAP investment, harmonize existing processes, implement new requirements and optimize their production systems.

We are experts for production-systems based on SAP and offer a comprehensive service portfolio from strategic advice and evaluation to optimization, implementation and integration supporting our customers on their path to the digital transformation.



Consulting &
Implementation



Value-Stream-
Mapping

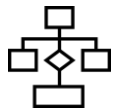


Training &
Enablement



QINLOX SERVICES

PRODUCTION SYSTEMS



CONSULTING & IMPLEMENTATION

Added value for our customers from strategy to "go-live": We provide consulting and implementation services for SAP based production solutions - from evaluation, migration and Integration to implementation and continuous improvement, considering the existing IT infrastructure, with a focus on the SAP standard.

- Production planning & Execution SAP/PP and PP/DS
- Sales planning in SAP APO and IBP
- Implementation and integration: SAP MM / SD / QM / EWM



VALUE-STREAM-MAPPING & -DESIGN

In order to improve production systems without conflicting objectives and in a sustainable manner, they must be viewed holistically. We are experts when it comes to mapping physical production processes based on SAP technology, analyzing facts, identifying potentials for improvements and optimizing processes.

- Value stream analysis
- Analytical evaluation and recommendations
- Value stream design & realization

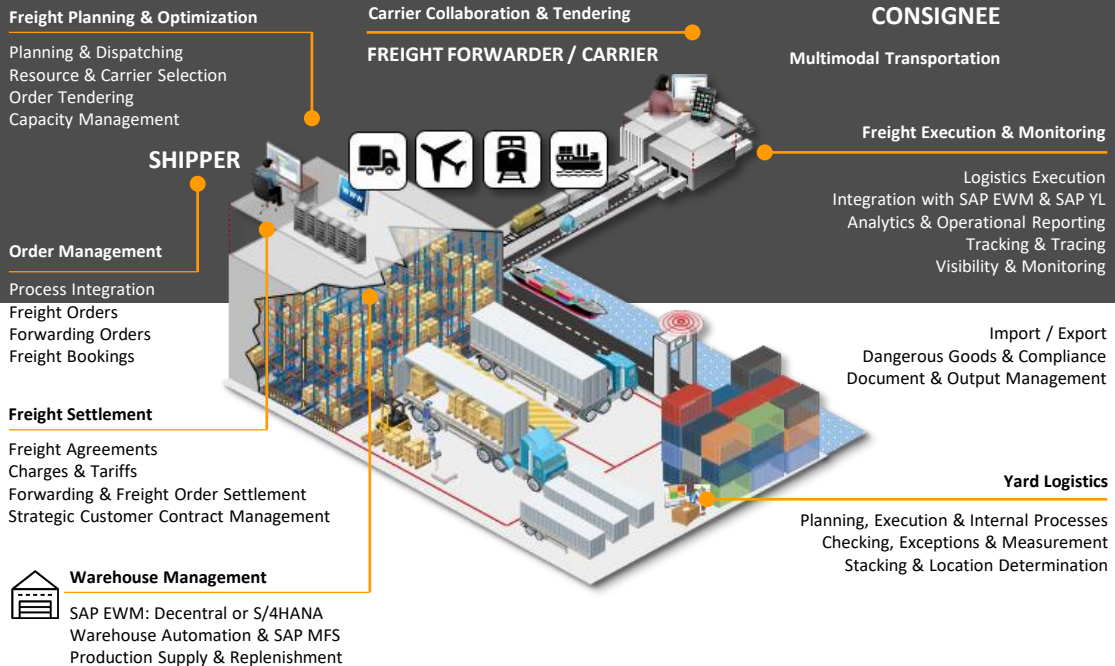


TRAINING & ENABLEMENT

Functional enhancements of the existing material-flow, new processes, supply-chain-concepts and strategies? We are experts when it comes to training and knowledge transfer of latest SAP innovations for production-systems.

- Bespoke Training Content from Planning to Execution
- Digital Transformation, industrial internet and paths to I4.0
- Bespoke Workshops & Corporate Case-Studies

TRANSPORTATION MANAGEMENT



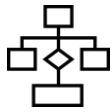
SAP provides shippers, consignees and logistics service providers with the ideal platform for modern transportation planning and execution. From inbound to outbound, domestic and international, inter- and multi-modal, from parcels to bulk, seamlessly integrated in SAP supply-chain processes.

We are experts in the implementation of SAP Transport Management. Based on SAP ERP, decentralized with SAP TM, as well as embedded in SAP S/4HANA and offer our customers a holistic Service-Portfolio to realize their specific requirements.

- SAP TM Transportation Management
- SAP TM in S/4HANA: Basic Shipping” or SAP S/4HANA Supply Chain for TM
- SAP ERP LE-TRA
- SAP YL – Yard Logistics

QINLOX SERVICES

TRANSPORTATION MANAGEMENT



EVALUATION & IMPLEMENTATION

Carrier collaboration, freight planning, managing simple and complex freight-agreements, tendering and precise freight cost calculation? The optimization and consolidation of freight plans for domestic, international, single, or multi-modal transportation, mixed pallet building, scheduling the most freight for the lowest cost while honoring service constraints? All seamlessly integrated in existing order processing and procurement operations? Qinlox helps you to identify the best-fit and architecture and implement:

- Transportation capacity, demand & freight planning
- Transportation requirements and forwarding order management
- Settlement, Interactive Freight Tendering, Sub-Contracting



INTEGRATION & ENHANCEMENTS

We help our customers integrating transportation management with with other SAP components and Legacy-Systems, enhance existing functionality and create bespoke solutions leveraging latest SAP technology. System- & Process Integration with Logistic-Execution, Yard Logistics and Warehouse-Management.

- Seamless Integration between SAP Applications & Legacy Systems
- Enhancement of standard business objects and processes
- UI-Enhancements and individual workflows



Denis Yuzhakov
Principal | Transportation-Management

SAP's strategy has been to deliver a common core – developing one code-line for transportation management – and delivering this for different deployment options to meet specific customer requirements.

Today, customers can also leverage new capabilities for transportation that are made available via the central S/4HANA platform."

SOCIAL RESPONSIBILITY

Qinlox regularly supports regional projects and institutions that sustainably improve the living conditions of sick or needy children and their families.

At the same time, we offer our colleagues a platform for their social commitment, encourage their dedication and create scope for voluntary work.

We are proud of this!



"Quality in Logistics" is part of our brand-image. Appreciation, tolerance and responsible cooperation regardless of origin, age and detached from classic hierarchies are part of our self-image.



EMPLOYEE-CENTRICITY

As a consulting company, our colleagues are our only, and most valuable assets. We consistently invest in the know-how of our employees and promote continuous training and further education.



WORK-LIFE BALANCE

Equal opportunities, Freedom for personal and professional development, work-life-balance, as well as a solid mentoring concept and time for individuality are an integral part of our corporate philosophy.



CORPORATE CULTURE

Compliance with ecological, ethical, social and humane standards is a matter of course for us - fulfilling our responsibility is part of our corporate culture.

WHY QINLOX?



SAP EWM Pioneer

From the development to the first implementation of SAP EWM, our experts were there from the very beginning!



FLEXIBILITY & AGILITY

Qinlox combines high quality industry and SAP product expertise with flat hierarchies and the flexibility and creativity of a small specialist provider.



QUALITY CLAIM

Quality and the satisfaction of our customers is our primary goal. Without ifs and buts!

Quality in Logistics

qin:lox[®]

qinlox consulting GmbH
L8,11 | 68161 Mannheim
www.qinlox.com